

Ani logger

CORE TEMPERATURE
MONITORING SOLUTION



APPLICATIONS :

- Thermoregulation
- Infectiology
- Chronobiology and sleep research
- Inflammation
- Immunology and vaccine development
- Toxicology

ANILOGGER'S ADDED VALUE:

- Core temperature remote monitoring
- Easy to use solution
- Improves animal welfare in preclinical research
- Reduces and refines animal use in research purpose

Ani logger is an innovative wireless monitoring device allowing reliable and continuous animal core temperature monitoring for veterinary purposes. This system uses an implantable or ingestible capsule that wirelessly and continuously transmits temperature data to a dedicated monitor. A single device monitors data coming from animals, whether they are group or single housed.

PRECLINICAL RESEARCH APPLICATIONS

The Ani logger system allows remote monitoring to understand thermal regulatory characteristics in animals. The system allows to enhance temperature monitoring, preserving social housing in small animal models. Considering temperature kinetics is critical for many research applications based on animals models: fever, metabolism, circadian rhythms, ...

A FRIENDLY USE SOLUTION

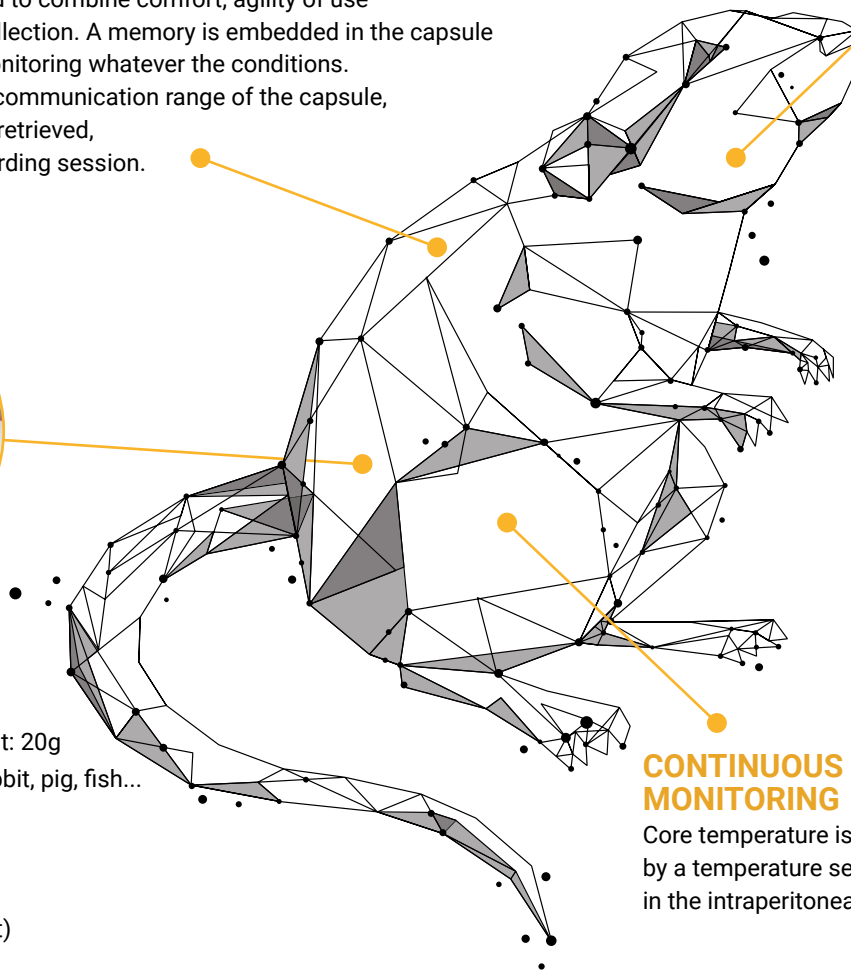
The system is designed to combine comfort, agility of use and ensure full data collection. A memory is embedded in the capsule to ensure long term monitoring whatever the conditions.

Once the monitor is in communication range of the capsule, data are automatically retrieved, during or after the recording session.



Minimum animal weight: 20g
Mouse, rat, monkey, rabbit, pig, fish...

Monitor can manage
up to 8 capsules
at a given time
(Animal size dependent)



CONTINUOUS CORE TEMPERATURE MONITORING

Core temperature is measured via telemetry by a temperature sensor which is implanted in the intraperitoneal cavity or directly swallowed.

TECHNICAL FEATURES

- Size of the pill: 17.7 mm x 8.9 mm
- Weight: 1.7g
- Temperature accuracy: $\pm 0.2^{\circ}\text{C}$
- Sterilized
- Storage: up to one year
- Sampling frequency: 1min, 2min, 5min, 15min, 1h.
- Operational duration: 1 to 10 months
- Transmission distance: maximum 3m (animal size depending)
- CE and FCC compliant